

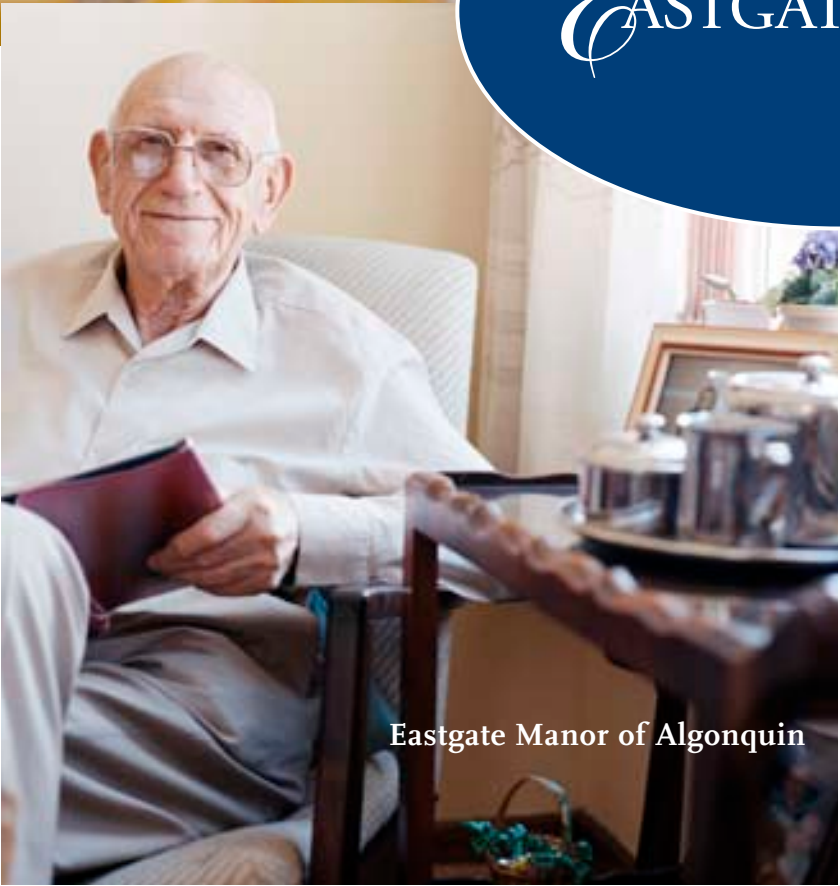


Welcome Home.



*E*ASTGATE MANOR

*Life Means Living. Life Remains
Purposeful. Life Values Friendship.*



Eastgate Manor of Algonquin

A Supportive Living Community



For us the decision was easy.

Eastgate Manor's special atmosphere just felt right for our mom.

We had so many questions and concerns. I was worried about Mom's safety and security and she wanted to maintain her independence. The staff at Eastgate Manor showed us how residents can have both and, as their needs change, how they can receive more help through additional services. They understood that change was hard on all of us. From our initial tour right through the day Mom moved in, they helped us at each step with care and patience. As a daughter my perspective was different than Mom's. Here is our story of why we chose Eastgate...



CARING STAFF WHO GET TO KNOW YOU AS AN INDIVIDUAL

Move-in Day certainly brought a high level of anxiety to Mom and me. Mom did not know anyone, and I did not know how Mom would adjust to her new surroundings. By the time the moving truck rolled up to the entrance, several staff and residents were there to share in the excitement of the new experience we were about to embark on. We were greeted and welcomed by so many people, who made us feel right at home before Mom even unpacked her boxes.

We quickly learned that Eastgate's staff is selected, not only for their skills, but first and foremost for their ability to relate to the residents' individual needs.

They understand that Eastgate Manor is the resident's home; however, they never pretend to be a substitute for a resident's family, but rather an extension.

Certified Nursing Assistants perform all those tasks that make life a little better and easier. They know residents' routines and help wherever they are needed—bathing, dressing, or maybe just listening. We were especially moved when a CNA told us:

"We all have things in common: we want to be comfortable and to be loved. That's what we bring to our residents—and what we get back in return!"

LOOKING FORWARD TO THE DAYS AHEAD

When I visit Mom she constantly reminds me of the decision to move to Eastgate. Her newest friend and neighbor from across the hall smiles and laughs as Mom tells me about her day. She has just returned from the supermarket where Mom picked up not only some basic necessities that were running low, but also a bouquet of day lilies to brighten up her apartment. The van takes residents to places that I have yet to go. I can tell Mom really enjoys the outings and the fact that, even at her age, she is still learning new things.

While Mom and I continued our conversation one afternoon on the patio, she invited me to join her for an early dinner with two of her closest friends. I accepted her invitation and was very impressed with my dining experience. Food and service is the key to any good restaurant, and both exceeded my expectations, as well as Mom's.

The servers like what they do and it shows. They quickly learn residents' tastes and preferences and serve them with grace and courtesy. Mom commented that the dining room servers love to see people enjoying themselves. They refill her coffee cup or get her an extra napkin—it's those little things that can make her day. And we've noticed that, along with the meals, they serve a good helping of laughter, too!

"From the moment she walked in the front door we realized that she had found her new home. Mom has made many new friends and looks forward to every new day."



Eastgate Manor's History

- 1984 Lexington Healthcare opens its first nursing and rehab center in Lombard, IL.
- 1986 Lexington opens its first retirement community in Lombard, IL
- 1991 Merit Home Healthcare is formed
- 1996 Lexington opens its tenth and largest nursing and rehab center in Orland Park, IL
- 2000 Eastgate Manor retirement community opens in Algonquin, IL
- 2003 Eastgate Manor obtains its Assisted Living license
- 2005 Lexington Foundation formed to provide scholarships and grants to surrounding communities
- 2006 Eastgate Manor is first Supportive Living facility certified in McHenry County, IL



From daily activities to annual events, Eastgate Manor's Activities Director creatively meets our residents' wide range of interests.

FITNESS/WELLNESS

- Walking Activities
- Functional Fitness
- Chair Exercises
- Tai Chi
- Routine Blood Pressure Clinics
- Health Presentations

SPIRITUAL

- Guided Meditation
- Catholic Communion Service
- Baptist Bible Service
- Lutheran Service
- Other Religious Services Provided
- Bible Study

OUTINGS

- Local Grocers
- Boutiques
- Area Restaurants
- Movie Theatres

COMMITTEES

- Resident Council
- Food Council

RECREATIONAL

- Board Games
- Current Events
- Nintendo Wii
- Card Games
- Crafts
- Cultural Musical Programming

SOCIAL EVENTS

- Birthday Tea Parties
- New Resident Welcome
- Special Entertainers
- Annual Eastgate BBQ
- Pet Visits
- Intergenerational Exchange

LIFE REMAINS PURPOSEFUL

As I frequently visit Mom, we often share stories and laugh more than ever. Mom has experienced some physical changes, and Eastgate has been able to increase personal care services to meet her needs. I sleep well at night knowing that Mom is in an environment where staff respect her as a unique individual.

LIFE MEANS LIVING

It is hard to believe that Mom has been here for over a year. How time really does fly when you are having fun. Now I realize why they call this place "supportive living". The staff is caring, consoling, and truly dedicated to making these years special.

Mom called me with concern in her voice the other day. She has always managed her funds, and when I heard her voice tone change, I became very worried. She mentioned that she was at a point where her funds were running low, and she feared running out in the next few months. We immediately talked with Eastgate and discussed the realities of Mom's situation. Eastgate assured us that because they are a licensed Supportive Living facility, they work with many families to get approved for financial support. Mom was relieved that her life would remain uninterrupted and her lifestyle would be maintained.

A designated representative from Eastgate walked us through the entire application process for Public Aid. Although it appeared to be very confusing, Eastgate supported us through the application process right through Mom's approval. It is so comforting to know that Eastgate is not a replacement for our family, but an extension.



The Residents of Eastgate...

- Are partners in the development of their care
- Can trust that dwindling finances will not compromise their comfort or lifestyle
- Are a community of seniors who benefit from care assistance; choosing what is right for them
- Have the desire to continuously learn while we provide them with that opportunity
- Are celebrated while they achieve accomplishments large or small

"The care giving staff is excellent. There is constant attention. This gives us peace of mind."





The right decision.

Making the move from her home to community living was emotionally challenging for Mom and for us. But running out of money is probably Mom's—and our family's—greatest worry. Eastgate Manor's move-in coordinator fully explained how Mom can expect to live at Eastgate Manor regardless of her changing financial conditions. She walked us through the Medicaid process, helped get the necessary documents and reassured all of us that Mom will not have to change her lifestyle. She'll have the same room, all the same services and the support of the same caring staff. We know this was the right decision and Eastgate Manor is the right place. With a Mom who's fulfilled and content, I can enjoy just being a daughter!

For more information on the process of becoming a resident at Eastgate Manor, or to initiate a consultation and tour of our community, please contact our Move-In Coordinator at 847-458-2800.

Visit our website at www.eastgatemanor.com

"With the Supportive Living concept here, we have financial peace of mind."

Frequently Asked Questions About Eastgate Manor

Eastgate Manor Floor Plans

Eastgate Manor Services & Amenities

Moving to Eastgate Manor



Now that you've made the decision to make Eastgate Manor your home, here are some necessary requirements. These screenings and documents will allow us to become the supportive environment you need.

SCREENINGS

- **Determination of Need**

Three documents: 2536, OBRA I, and DON

Our Move-in Coordinator will assist in determining the appropriate agency to complete the necessary assessments.

- **If you are currently hospitalized or in a Skilled Nursing facility**, you can arrange for these documents to be forwarded to Eastgate Manor. Please discuss this with our Move-in Coordinator.

- **Eastgate Manor Assessment**

We will schedule an appointment with our nursing staff.

DOCUMENTATION

- **Medical Survey**

This includes the results of a two-step TB test and a list of your current medications.

Note: *If you are currently in a Skilled Nursing Facility, you will be required to sign a release before that information can be forwarded to Eastgate Manor.*

- **Health History Questionnaire**

This can be completed by you or a family member.

- **Confidential Application**

This can be completed by you or your designated representative.

- **Authorization of Release of Medical Information.**

This allows us to receive information from your doctor, or alternate healthcare provider, that will make us aware of your medical needs.

- **Responsible Party Designation**

This allows you to identify family member or other representative to whom Eastgate Manor is authorized to release information about your care or other concerns.

- **Identification**

Please include copies of the following cards (front and back)

- Medicare Card or Primary Insurance Card
- Primary Insurance
- Social Security Card
- Any supplemental insurance, including Medicare D

- **Federal or State-Issued Photo Identification**

- **Advance Directives, any of the following that you have in place:**

- Living Will
- Power of Attorney for Healthcare of Property
- Do Not Resuscitate Order
- Declaration for Mental Health Treatment

Note: *As your directives can change, we request new copies of the most current documents in order to meet emergencies that may occur.*

Frequently Asked Questions About Eastgate Manor



Q. IS THERE A NURSE AVAILABLE TO ATTEND TO MY NEEDS?

A. With 24-hour CNA nursing assistance, you can be assured that your unscheduled needs will be attended to. We also have a Nurse on staff 7 days a week for your safety and peace of mind.

Q. I UNDERSTAND THAT THREE MEALS A DAY ARE INCLUDED, BUT HOW IS THE FOOD?

A. Food and meals are a vital part of life and we encourage residents to participate in creating our menus. You choose from each day's menu items and our wait staff brings your selection to your table in our restaurant-style dining room.

Q. WHAT HAPPENS IF MY FUNDS RUN OUT WHILE I'M LIVING AT EASTGATE MANOR?

A. As your situation changes, you can feel secure that you will not have to move out when your savings are depleted. Our dedicated staff will assist you in the application process for public aid under the Supportive Living Program.

Q. IF I LIVE AT EASTGATE MANOR, CAN I COME AND GO AS I PLEASE?

A. Absolutely! We encourage you to spend personal time away with family and friends. Residents who receive financial assistance through the Illinois Department of Public Aid simply need to maintain compliance with the guidelines established (30 days per State fiscal year.)

Q. DOES EASTGATE MANOR SCHEDULE TRIPS OR OUTINGS?

A. We offer scheduled shopping and social outings throughout the month. By participating in our resident council meetings, you can influence the choice of excursions in future months.

Q. CAN I PARTICIPATE IN DECISIONS ABOUT MY CARE?

A. By all means. We encourage your involvement. In our resident assessment process and the development of

your service plan, our staff will include input from you and your family in order to keep you involved in decisions that impact your daily life.

Q. IF I DON'T FEEL WELL, WILL SOMEONE CHECK ON ME AND DELIVER MY MEALS?

A. Yes, any time you are feeling under the weather, you will be seen by the care-giving staff or a nurse. We'll arrange to deliver your meal selections through room service.

Q. HOW IS A SUPPORTIVE LIVING COMMUNITY DIFFERENT FROM A RETIREMENT COMMUNITY OR NURSING HOME?

A. Resident seeks to make their home in a Supportive Living community when their well-being can be enhanced by a minimal level of assistance. Supportive Living, however, is not intended to provide the level of care needed by residents who require 24 hour skilled care or supervision.

Q. WHEN DO I HAVE TO MOVE OUT OF EASTGATE MANOR?

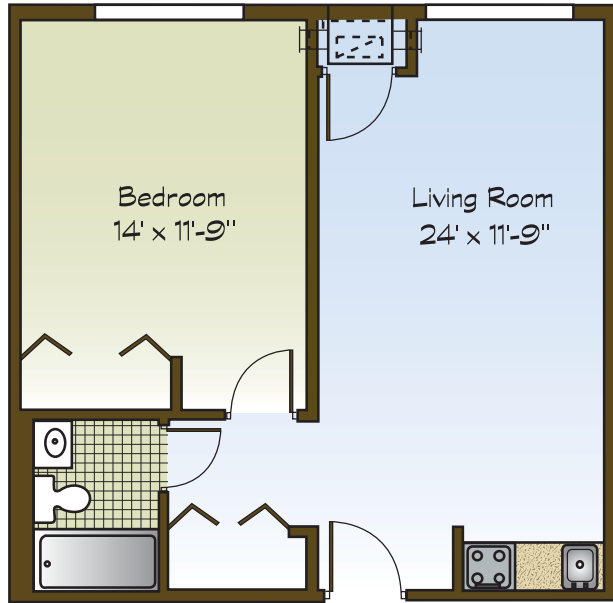
A. Eastgate Manor should be considered your home. If your health well-being or safety needs have increased, we would initiate communication, with you and your representative. Eastgate staff would act as a resource and partner to begin the search for a suitable healthcare facility to properly manage your needs.

Q. HOW DO I KNOW IF EASTGATE IS THE RIGHT PLACE FOR ME?

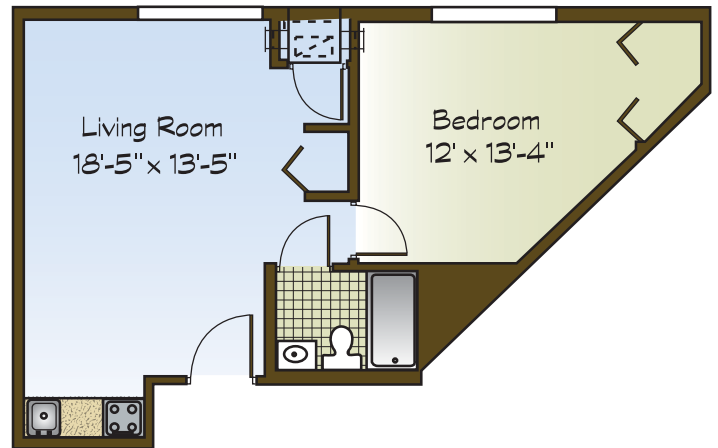
A. After you visit with us we believe that you will have a good understanding of what makes a place feel like home. At Eastgate it's clear that people who live and work here are proud of their surroundings. We take great pride in selecting the right staff members to care for our residents. We strive to accommodate your wants and wishes while ensuring we meet your needs on a daily basis. We are confident you will discover what truly makes Eastgate the right place to call home.

Eastgate Manor Floor Plans

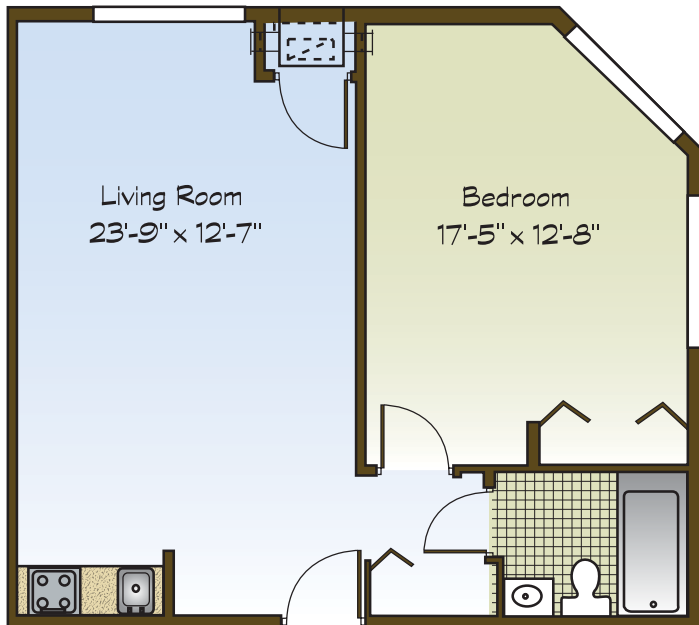
*Dimensions are not to scale.



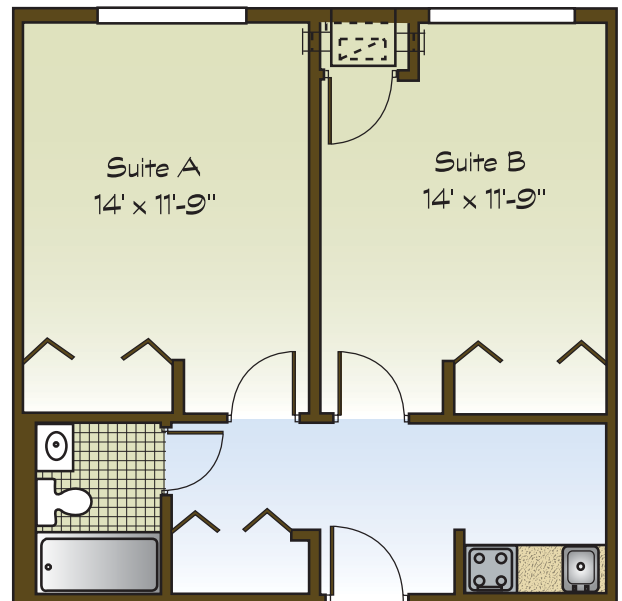
CAMBRIDGE
574 sq. FT



WINDSOR
490 sq. FT



ASHTON
600 sq. FT

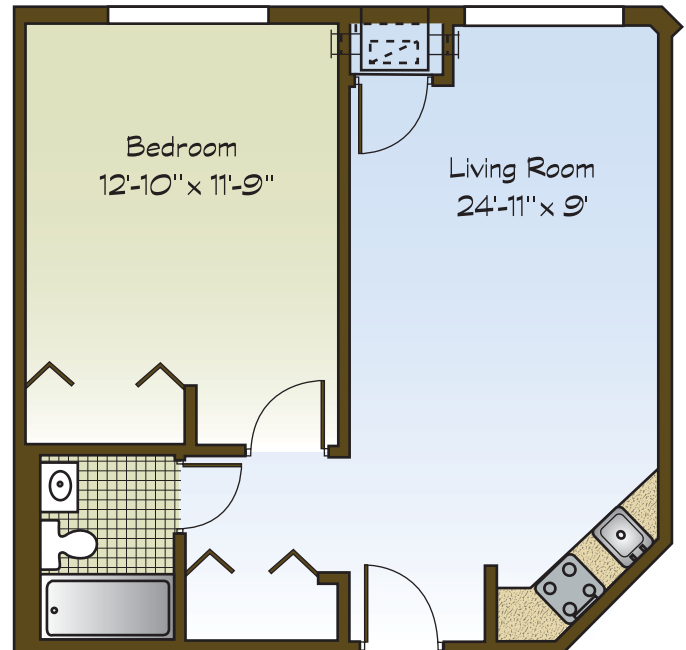
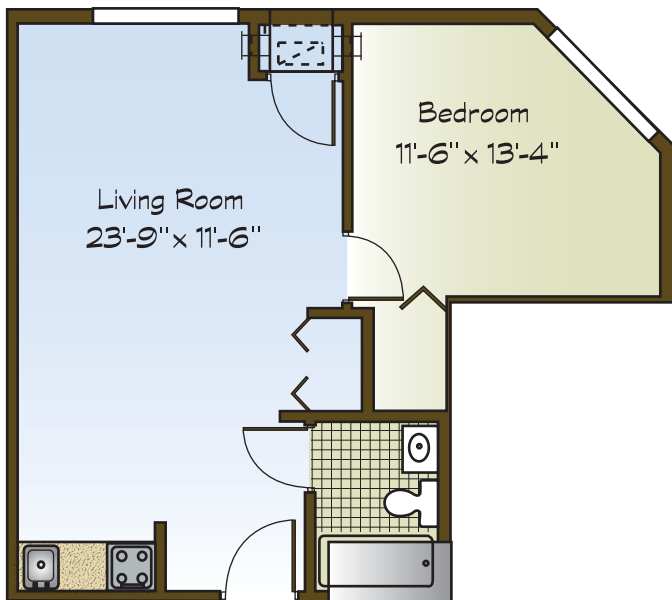
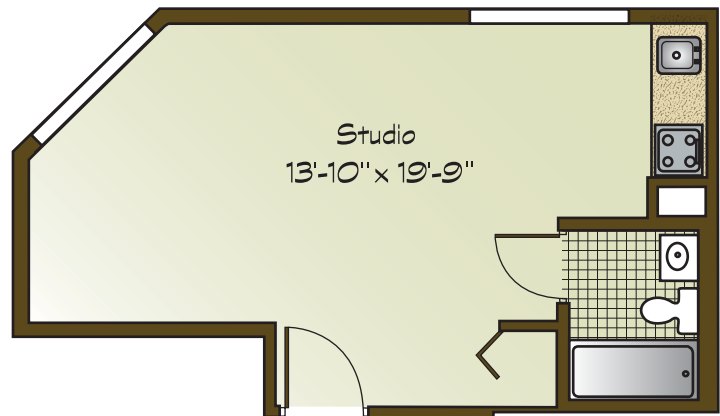
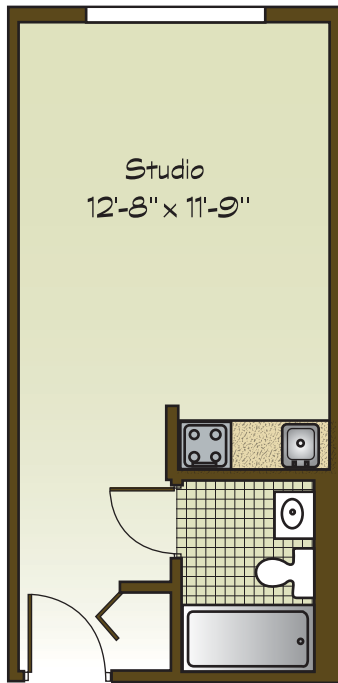


COMPANION SUITE
547 sq. FT

Eastgate Manor Floor Plans

*Dimensions are not to scale.

EASTGATE MANOR
Supportive Living



Eastgate Manor Services & Amenities



INCLUDED IN RESIDENTS' MONTHLY FEES:

- Three meals a day, including continental breakfast and restaurant-style lunch and dinner
- Utilities, including water, electricity and individual controlled heat & air conditioning,
- Weekly housekeeping
- Weekly laundry and resident-accessible laundry rooms
- Scheduled transportation
- 24-hour Certified Nursing Assistants
- Licensed Nurse 7 days a week
- Routine maintenance
- Social, educational and functional fitness programs
- Religious and Cultural Programs
- Library
- Country Store
- Craft room
- Banking
- Courtyard
- Emergency call system
- Fire protection system

OPTIONAL SERVICES AND AMENITIES AVAILABLE AT ADDITIONAL FEES:

- Personal care assistance, including bathing, grooming, dressing, medication set-up and/or reminders, escort to meals and activities
- Special events and outings
- On-site beautician and/or barber services
- On-site physician visits
- Dental
- Audiology
- Laboratory
- Pharmacy delivery
- Medication management and oversight

Moving to Eastgate Manor



Now that you've made the decision to make Eastgate Manor your home, here are some necessary requirements. These screenings and documents will allow us to become the supportive environment you need.

SCREENINGS

- **Determination of Need**

Three documents: 2536, OBRA I, and DON

Our Move-in Coordinator will assist in determining the appropriate agency to complete the necessary assessments.

- **If you are currently hospitalized or in a Skilled Nursing facility**, you can arrange for these documents to be forwarded to Eastgate Manor. Please discuss this with our Move-in Coordinator.

- **Eastgate Manor Assessment**

We will schedule an appointment with our nursing staff.

DOCUMENTATION

- **Medical Survey**

This includes the results of a two-step TB test and a list of your current medications.

Note: If you are currently in a Skilled Nursing Facility, you will be required to sign a release before that information can be forwarded to Eastgate Manor.

- **Health History Questionnaire**

This can be completed by you or a family member.

- **Confidential Application**

This can be completed by you or your designated representative.

- **Authorization of Release of Medical Information**

This allows us to receive information from your doctor, or alternate healthcare provider, that will make us aware of your medical needs.

- **Responsible Party Designation**

This allows you to identify a family member or other representative to whom Eastgate Manor is authorized to release information about your care or other concerns.

- **Identification**

Please include copies of the following cards (front and back)

- Medicare Card or Primary Insurance Card
- Primary Insurance
- Social Security Card
- Any supplemental insurance, including Medicare D

- **Federal or State-Issued Photo Identification**

- **Advance Directives, any of the following that you have in place:**

- Living Will
- Power of Attorney for Healthcare of Property
- Do Not Resuscitate Order
- Declaration for Mental Health Treatment

Note: As your directives can change, we request new copies of the most current documents in order to meet emergencies that may occur.



Eastgate Manor
101 Eastgate Court
Algonquin, Illinois 60102
Phone: 847.458.2800
Fax: 847.458.0017
www.eastgatemanor.com

Affiliated with Lexington Healthcare

Lexingtonhealth.com